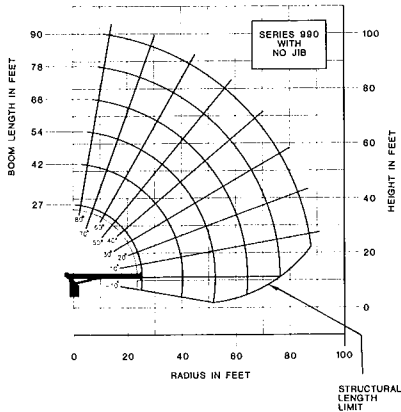


National Series 900 Load Rating Charts

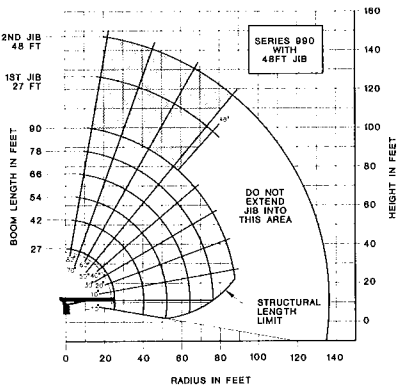
The capacities shown will be reduced when accessories are attached to the boom or loadline.

Note: Rated loads do not exceed 85% of the tipping load. Structural strength ratings in the chart below are shaded.



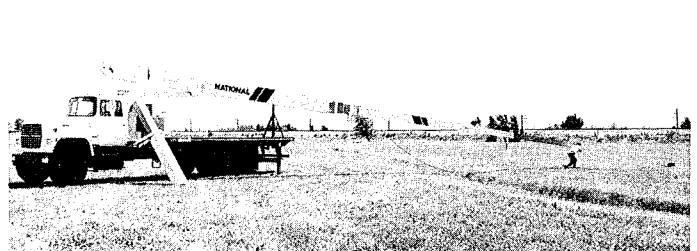
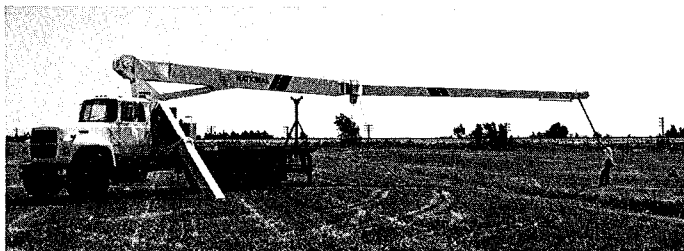
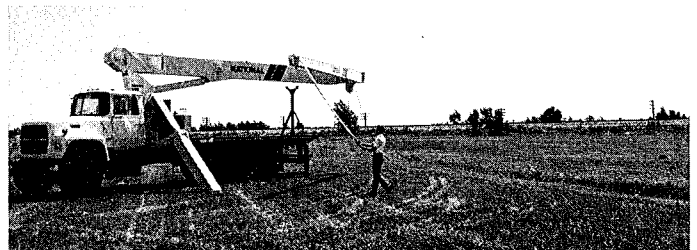
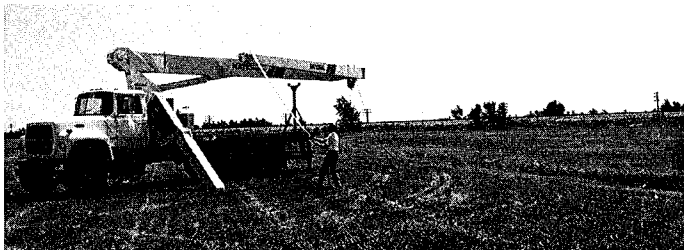
LOAD RATINGS												LOADLINE EQUIPMENT DEDUCT		
LOAD RADIUS (FEET)	LOADED BOOM ANGLE	27FT BOOM (LBS)	LOADED BOOM ANGLE	42FT BOOM (LBS)	LOADED BOOM ANGLE	54FT BOOM (LBS)	LOADED BOOM ANGLE	66FT BOOM (LBS)	LOADED BOOM ANGLE	78FT BOOM (LBS)	LOADED BOOM ANGLE	90FT BOOM (LBS)		
5	79	46,000												
8	72	33,000												
10	67	27,400	76½	23,900	80	22,300								
12	62	23,900	73½	20,900	77½	19,100								
14	57	20,500	70½	18,100	75½	16,700	79	15,400						
16	51	18,100	67½	16,100	73½	14,800	77	13,500	79½	12,600				
20	37	14,500	61	13,100	68½	12,000	73	11,000	76½	10,200	79	9,600		
25			52½	10,500	62½	9,700	68½	8,900	72½	8,200	75½	7,700		
30			43	8,650	56	8,100	63½	7,300	68½	6,700	72	6,200		
35			30	6,950	49	6,700	58½	6,200	64½	5,650	68½	5,200		
40					41	5,700	53	5,300	60	4,850	65	4,500		
45					31½	4,700	47	4,600	55½	4,200	61½	3,900		
50					17	3,400	40½	3,850	51	3,700	57½	3,350		
55							32½	3,200	45½	3,200	53½	2,900		
60							22	2,450	40	2,700	49	2,500		
65									33	2,250	44½	2,150		
70									25	1,750	39½	1,800		
75									11	900	34	1,450		
80											27	1,100		
85											17	600		

DOWNHAUL WEIGHT = 150
ONE SHEAVE BLOCK = 200
TWO SHEAVE BLOCK = 355
THREE SHEAVE BLOCK = 530



LOAD RATINGS												LOADLINE EQUIPMENT DEDUCT					
LOAD RADIUS (FEET)	LOADED BOOM ANGLE	27FT BOOM (LBS)	LOADED BOOM ANGLE	42FT BOOM (LBS)	LOADED BOOM ANGLE	54FT BOOM (LBS)	LOADED BOOM ANGLE	66FT BOOM (LBS)	LOADED BOOM ANGLE	78FT BOOM (LBS)	LOADED BOOM ANGLE	90FT BOOM (LBS)	LOAD RADIUS (FEET)	LOADED BOOM ANGLE	27FT JIB (LBS)	LOADED BOOM ANGLE	48FT JIB (LBS)
5	79	46,000											30	77	4,800	79½	3,100
8	72	32,000			80	22,000							35	74½	4,300	77½	2,900
10	67	26,700	76½	23,500	77½	18,800							40	72	3,650	75½	2,700
12	62	22,800	73½	20,500	75½	16,400	79	15,200					45	69	3,000	73½	2,500
14	57	19,800	70½	17,700	73½	14,500	77	13,300	79½	12,400			50	66½	2,450	71½	2,300
16	51	17,400	67½	15,700	73½	14,500	77	13,300	79½	12,400			55	63½	2,000	69½	2,100
20	37	13,800	61	12,700	68½	11,700	73	10,800	76½	10,000	79	9,500	60	60½	1,600	67	1,800
25			52½	10,100	62½	9,400	68½	8,700	72½	8,000	75½	7,600	65	57½	1,300	64½	1,500
30			43	8,250	56	7,800	63½	7,100	68½	6,500	72	6,100	70	54½	1,000	62	1,250
35			30	6,550	49	6,400	58½	6,000	64½	5,450	68½	5,100	75	51½	750	59½	1,050
40					41	5,400	53	5,100	60	4,650	65	4,400	80	48	500	57	850
45					31½	4,400	47	4,400	55½	4,000	61½	3,800	85	51	54	650	
50					17	3,100	40½	3,650	51	3,500	57½	3,250	90		51	450	
55							32½	3,000	45½	3,000	53½	2,800					
60							22	2,250	40	2,500	49	2,400					
65									33	2,050	44½	2,050					
70									25	1,550	39½	1,700					
75									11	700	34	1,350					
80											27	1,000					
85											17	500					

LOADLINE EQUIPMENT DEDUCT
DOWNHAUL WEIGHT = 150
ONE SHEAVE BLOCK = 200
TWO SHEAVE BLOCK = 355
THREE SHEAVE BLOCK = 530



This sequence of photos shows how a National jib folds out into a working position.