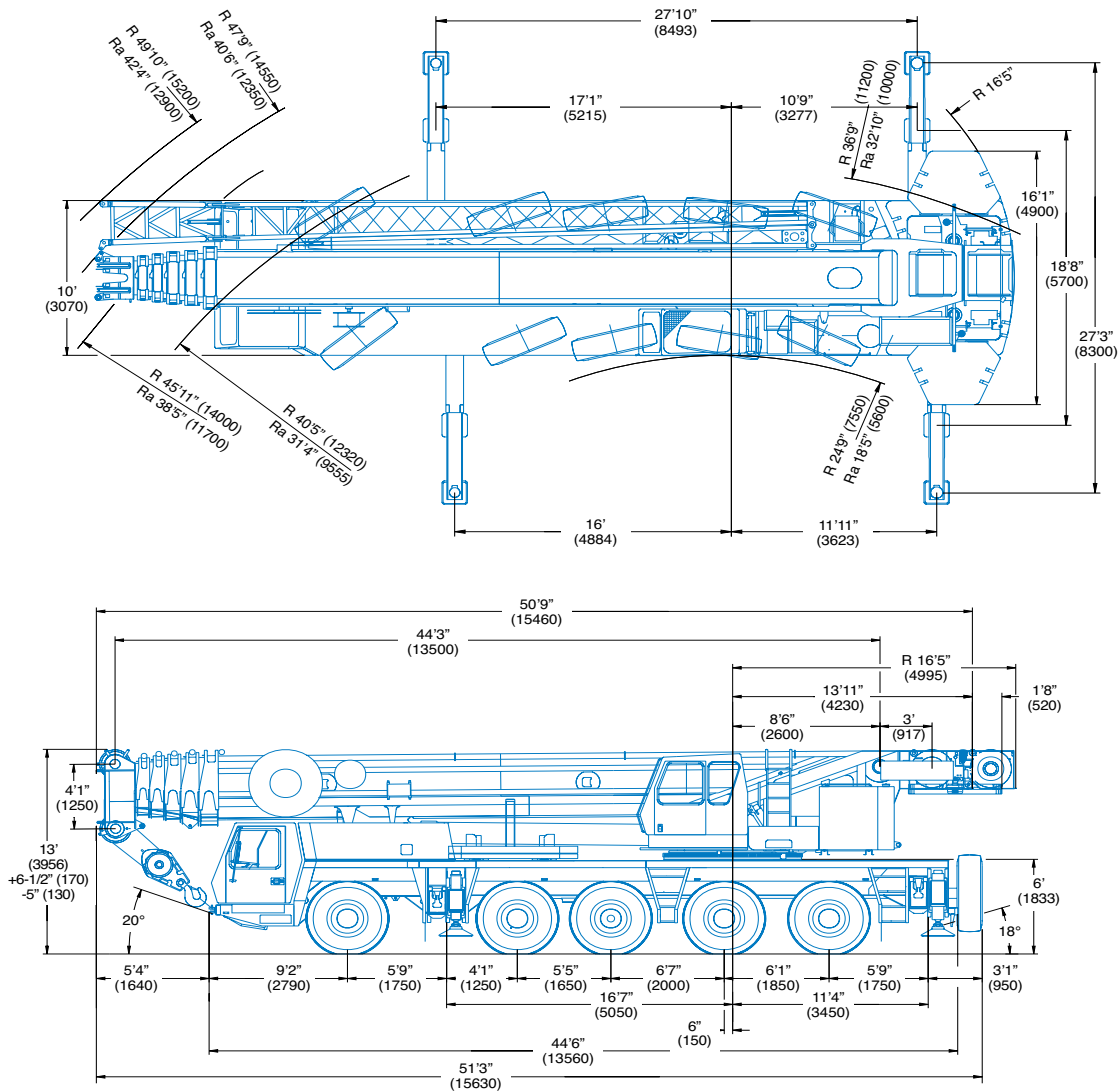


Dimensions

Cummins V ersion



Note: () Reference dimensions in mm

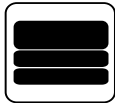
BASIC WEIGHTS (LBS.)	Axles 1 - 3	Axles 4 & 5	Total
With Cummins Power, 10x8x10, 20.5 R25 Tires	82,480	52,060	134,540
With Mercedes Power, 10x8x10, 20.5 R25 Tires	80,544	53,115	133,659
Additions:			
Outrigger Pads	97	212	309
Auxiliary Hoist	-(3,340)	7,066	3,726
Brackets & Hydraulic Reeling Drum for Lattice Extension	934	-(273)	661
Lattice Extension - 43/72 ft	6,715	-(1,424)	5,291
Spare Tire - 14.00 R25 (including stowage bracket)	-(395)	979	584
Spare Tire - 16.00 R25 (including stowage bracket)	-(485)	1,202	717
Spare Tire - 20.5 R25 (including stowage bracket)	-(553)	1,362	809
Removal:			
Front Outrigger Beams & Jacks	-(5,315)	730	-(4,585)
Rear Outrigger Beams & Jacks	2,992	-(8,614)	-(5,622)
Boom Assembly (minus lift cylinder)*	-(41,678)	-(3,230)	-(44,908)
Lift Cylinder*	-(3,404)	-(1,071)	-(4,475)
10x6x10 in lieu of 10x8x10	-(159)	-(701)	-(860)
16.00 R25 Tires in lieu of 20.5	-(556)	-(370)	-(926)
14.00 R25 Tires in lieu of 20.5	-(1,349)	-(900)	-(2,249)

*Reflects weights with superstructure facing forward

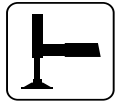
Working range



44 - 197 ft.
(13.5 - 60 m)



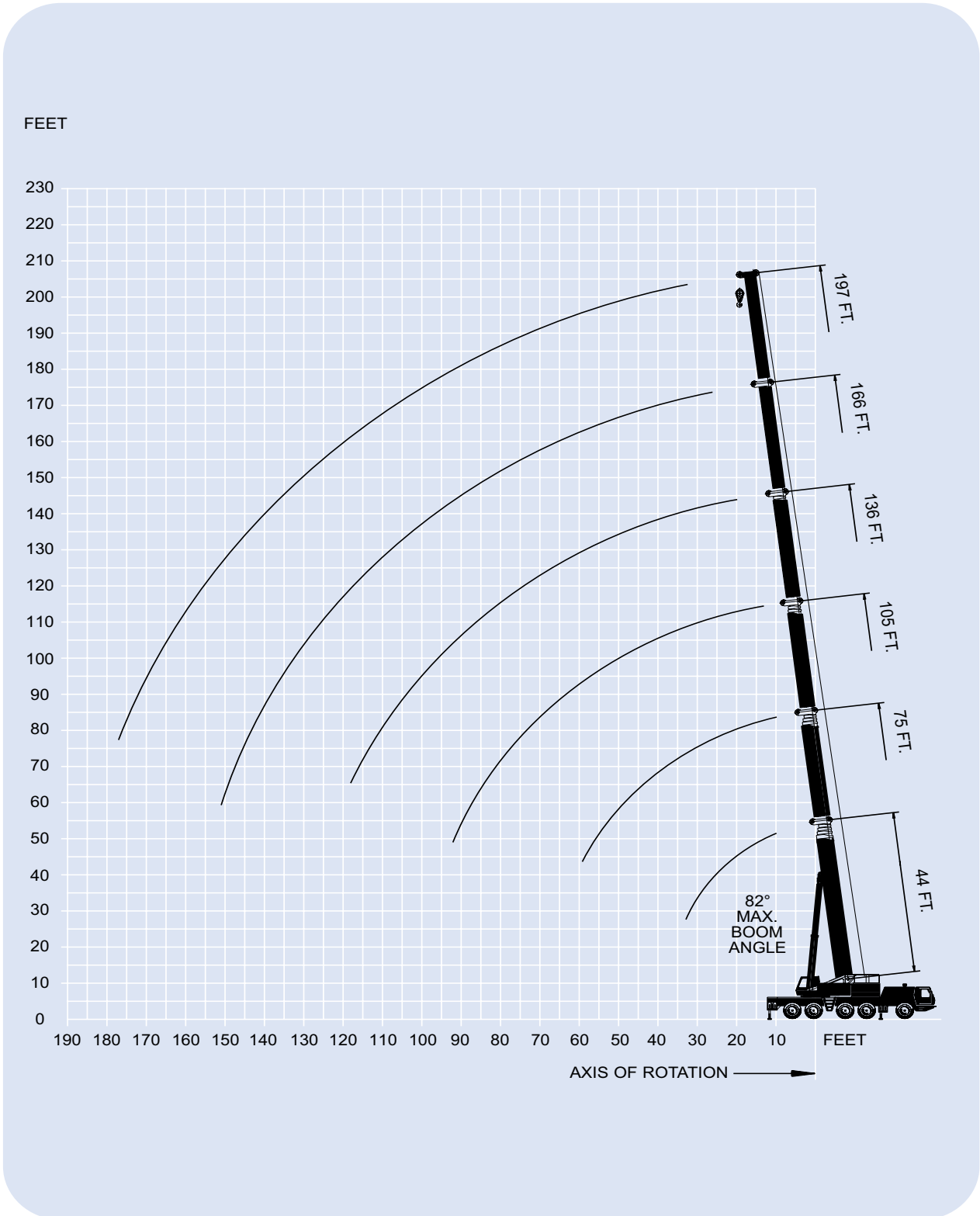
138,800 lbs.
(63,000 kg)



100%



360°



		Pounds (thousands)										
Feet	44*	44	60	75	90	105	121	136	151	166	182	197
9	420.0											
10	386.0	338.0	334.0	260.0	189.0							
15	308.0	262.0	264.0	258.0	189.0	153.0						
20	254.0	211.0	213.0	209.0	187.0	153.0	121.0	92.0				
25	210.0	176.0	178.0	175.0	174.0	150.0	121.0	87.0	68.0			
30	169.0	150.0	151.0	148.0	150.0	137.0	118.0	82.0	65.0	56.0	45.0	
35			131.0	128.0	130.0	123.0	109.0	76.0	63.0	54.0	44.0	38.8
40			115.0	112.0	114.0	112.0	99.0	73.0	61.0	52.0	43.0	38.4
45			103.0	99.0	101.0	102.0	90.0	66.0	59.0	50.0	42.2	37.4
50				88.0	90.0	92.0	83.0	61.0	56.0	49.0	41.0	36.4
55				78.0	80.0	82.0	77.0	57.0	51.0	47.0	39.8	35.4
60					70.0	72.0	72.0	54.0	47.0	43.8	38.4	34.4
65					65.0	63.0	66.0	51.0	42.4	40.0	36.8	33.4
70					58.0	56.0	59.0	48.0	39.4	37.2	35.4	32.4
75					52.0	52.0	53.0	45.0	36.4	34.4	33.2	31.4
80						48.0	48.0	42.8	34.4	31.8	30.8	30.0
85						45.0	43.4	41.0	33.0	30.0	28.6	28.0
90							40.8	39.4	31.4	28.0	26.4	26.0
95								35.8	37.4	29.8	26.4	24.0
100									32.6	34.6	28.4	22.4
105										27.2	23.6	21.0
110										29.2	26.2	19.8
115										27.0	25.0	18.6
120											24.0	17.4
125											22.8	16.4
130											21.6	15.4
135											20.6	14.6
140												16.2
145												15.4
150												14.8
155												12.0
160												11.6
165												11.0
170												10.4
175												9.8
180												9.2
												8.6

*Over rear only. 27'10" x 18'8" outrigger base.
Lifting capacities greater than 350,000 lbs (160,000 kg) require additional equipment.

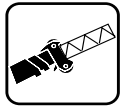
		Pounds (thousands)																				
Feet	44.3	59.6	74.8	90.1	105.3	120.6	135.8	151.1	166.3	181.6	196.9											
10	322.0	322.0	260.0	189.0																		
15	250.0	250.0	248.0	189.0	153.0																	
20	201.0	201.0	200.0	187.0	153.0	121.0	92.0															
25	168.0	167.0	166.0	168.0	150.0	121.0	87.0	68.0														
30	137.0	137.0	135.0	130.0	127.0	118.0	82.0	65.0	56.0	45.0												
35		108.0	106.0	105.0	103.0	102.0	76.0	61.0	54.0	44.0	38.8											
40		85.0	84.0	86.0	86.0	86.0	71.0	57.0	52.0	43.0	38.4											
45		69.0	68.0	70.0	73.0	73.0	65.0	53.0	50.0	42.2	37.4											
50			56.0	58.0	61.0	63.0	61.0	50.0	49.0	41.0	36.4											
55			47.0	49.0	52.0	54.0	56.0	46.0	47.0	39.8	35.4											
60				41.8	44.0	47.0	49.0	43.6	43.2	38.4	34.4											
65				35.6	38.2	41.0	42.8	40.6	38.2	36.8	33.4											
70				30.4	33.0	35.8	37.8	38.4	34.0	34.2	32.4											
75					26.2	28.8	31.4	33.4	34.4	30.2	30.6	31.4										
80						25.0	27.6	29.6	30.8	26.8	27.4	28.4										
85						21.8	24.4	26.4	27.4	23.6	24.6	25.6										
90							19.0	21.6	23.6	24.6	20.8	21.8	23.0									
95								19.2	21.0	22.2	18.2	19.2	20.8									
100									17.0	18.8	19.8	16.0	18.6									
105										16.8	18.0	14.2	15.0	16.6								
110											15.2	16.2	12.4	13.4	14.8							
115												13.4	14.6	10.8	11.8	13.2						
120													13.0	9.4	10.4	11.8						
125														11.6	8.0	9.0	10.4					
130															10.4	6.8	7.8	9.2				
135																9.4	5.8	6.6	8.0			
140																	4.6	5.6	7.0			
145																		3.8	4.6	6.0		
150																			2.8	3.8	5.2	
155																					3.0	4.4
160																						3.6
165																						2.8
170																						
175																						
180																						

THIS CHART IS ONLY A GUIDE AND SHOULD NOT BE USED TO OPERATE THE CRANE. The individual crane's load chart, operating instructions and other instructional plates must be read and understood prior to operating the crane.

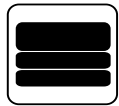
Working Range



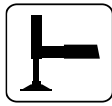
121 - 197 ft.
(36,8 - 60 m)



43 - 125 ft.
(13 - 38 m)



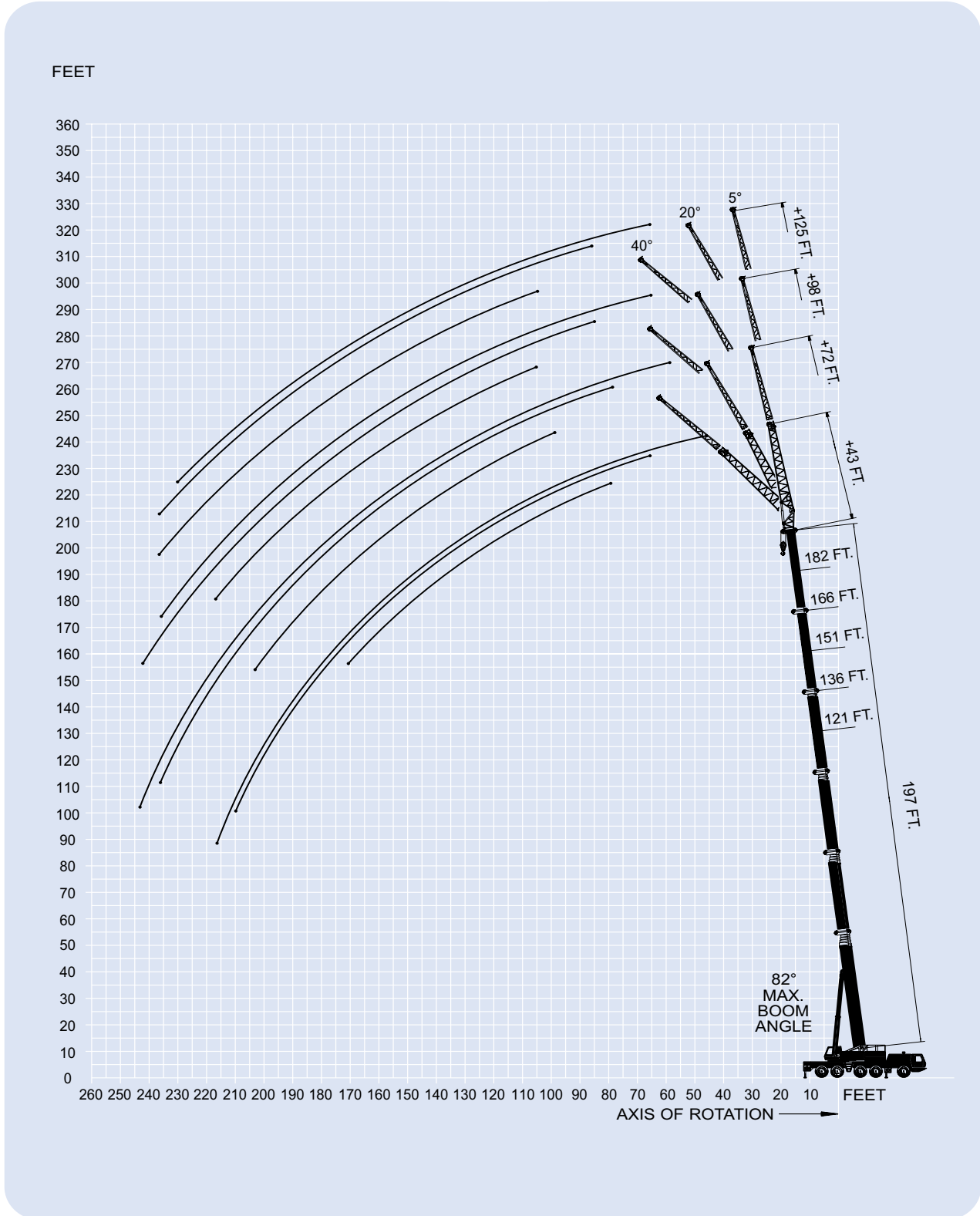
138,800 lbs.
(63,000 kg)



100%



360°



		43 FT		72 FT		98 FT		125 FT	
		5°	20°	5°	20°	5°	20°	5°	20°
40	18.6								
45	18.6								
50	18.4								
55	18.4	18.6		12.2					
60	18.4	18.6		12.2		9.2		6.4	
65	18.2	18.4		12.2		9.2		6.4	
70	18.2	18.4	18.0	12.2		9.2		6.4	
75	18.2	18.4	18.0	12.2	11.0	9.2		6.4	
80	18.2	18.4	18.0	12.2	10.8	9.2		6.4	
85	18.0	18.2	18.0	12.2	10.8	9.2		6.4	
90	17.6	18.0	18.0	12.2	10.8	9.2	9.2	6.4	6.4
95	17.4	17.8	18.0	12.0	10.6	10.0	9.2	6.4	6.4
100	17.0	17.4	18.0	12.0	10.6	10.0	9.2	6.4	6.4
105	16.6	17.0	17.4	12.0	10.6	10.0	9.2	7.8	6.4
110	16.2	16.6	16.6	11.8	10.4	10.0	9.2	7.8	6.4
115	15.6	15.8	16.0	11.8	10.4	9.8	9.2	7.8	6.4
120	14.6	15.0	15.2	11.6	10.4	9.8	9.2	7.8	6.4
125	13.8	14.0	14.4	11.6	10.4	9.8	9.2	7.8	6.2
130	13.0	13.2	13.8	11.6	10.4	9.6	9.2	7.8	6.2
135	12.4	12.6	13.0	11.4	10.2	9.6	9.0	7.8	6.0
140	11.6	12.0	12.4	11.0	10.2	9.6	8.8	7.8	6.0
145	11.0	11.2	11.8	10.4	10.0	9.4	8.6	7.6	5.8
150	10.4	10.6	11.0	10.0	9.8	9.4	8.4	7.6	5.6
155	9.6	10.0	10.4	9.4	9.6	9.4	8.0	7.4	5.6
160	9.0	9.4	9.8	9.0	9.2	9.2	7.8	7.4	5.4
165	8.4	8.8	9.2	8.6	9.0	9.2	7.6	7.2	5.2
170	8.0	8.2	8.6	8.0	8.6	8.8	7.2	7.0	5.2
175	7.4	7.8		7.6	8.0	8.4	6.8	6.8	5.0
180	7.0	7.2		7.2	7.6	8.0	6.6	6.6	5.0
185	6.6	6.8		6.8	7.2	7.6	6.2	6.4	4.8
190	6.0	6.2		6.2	6.8	7.2	5.8	6.0	4.8
195	5.6	5.8		5.8	6.4	7.0	5.4	5.8	4.6
200	5.2	5.4		5.4	6.0	6.4	5.0	5.4	4.6
205	4.8	5.0		5.0	5.6	6.0	4.8	5.2	4.4
210	4.4			4.8	5.2	5.6	4.4	4.8	4.2
215	4.0			4.4	4.8	5.2	4.0	4.4	4.0
220				4.0	4.4	5.0	3.6	4.0	3.8
225				3.6	4.0	4.8	3.4	3.6	3.6
230				3.2	3.6	4.6	3.0	3.4	3.4
235				3.0	3.2	4.4	2.6	3.0	3.2
240				2.6		4.2	2.4	2.8	3.0
245				2.4		4.0	2.4	2.6	2.8

		43 FT		72 FT		98 FT		125 FT	
		5° - 20°	20° - 40°	5° - 20°	20° - 40°	5° - 20°	20° - 40°	5° - 20°	20° - 40°
55	16.8								
60	16.8								
65	16.8								
70	16.8	16.4							
75	16.8	16.4		10.0					
80	16.8	16.4		9.8					
85	16.6	16.4		9.8					
90	16.4	16.4		9.8					
95	16.2	16.4		9.6	9.2				
100	15.8	16.2		9.6	9.0	8.4		5.8	
105	15.4	15.8		9.6	9.0	8.4	7.0	5.8	
110	15.0	15.2		9.6	9.0	8.4	7.0	5.8	5.8
115	14.4	14.4		9.4	9.0	8.2	7.0	5.8	5.8
120	13.6	13.8		9.4	9.0	8.0	7.0	5.8	5.8
125	12.8	13.2		9.4	8.8	7.8	7.0	5.8	5.8
130	12.0	12.4		9.4	8.8	7.8	7.0	5.6	5.6
135	11.4	11.8		9.4	8.6	7.6	7.0	5.6	5.4
140	10.8	11.2		9.4	8.6	7.4	7.0	5.4	5.4
145	10.2	10.6		9.2	8.6	7.4	7.0	5.4	5.2
150	9.6	10.0		9.0	8.6	7.2	6.8	5.2	5.2
155	9.2	9.4		8.6	8.4	7.0	6.8	5.2	5.0
160	8.6	8.8		8.4	8.4	7.0	6.6	5.0	5.0
165	8.0	8.4		8.2	8.4	6.8	6.6	4.8	4.8
170	7.6	7.8		7.8	8.0	6.6	6.4	4.8	4.8
175	7.0			7.4	7.6	6.2	6.2	4.6	4.6
180	6.6			7.0	7.4	6.0	6.2	4.6	4.6
185	6.2			6.6	7.0	5.8	6.0	4.4	4.4
190	5.6			6.2	6.6	5.6	5.8	4.4	4.4
195	5.2			5.8	6.2	5.2	5.6	4.2	4.2
200	4.8			5.4	5.8	5.0	5.4	4.0	4.2
205	4.4			5.0	5.4	4.6	5.0	3.8	4.0
210				4.6	5.0	4.4	4.8	3.6	3.8
215				4.0	4.6	4.0	4.4	3.4	3.6
220				4.0	4.4	3.6		3.2	3.4
225				3.6	4.0	3.4		3.0	3.2
230				3.2	3.6	3.0		2.8	3.2
235				3.0	3.2	2.8		2.6	2.8
240						2.4		2.2	

THIS CHART IS A GUIDE AND SHOULD NOT BE USED TO OPERATE THE CRANE. The individual crane's load chart, operating instructions and other instructional plates must be read and followed.